

# SEGÂH SAZ SEMÂİSİ

USUL: AKSAK SEMÂİ

BESTE: SADİ İŞILAY

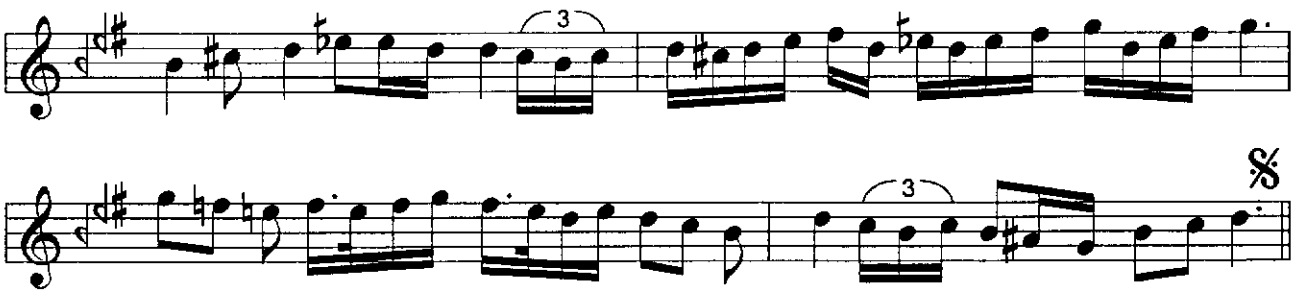
## 1.HANE



## TESLİM



## 2.HANE



## 3.HANE



#### 4.HANE

This musical score, titled "4.HANE", is written in G major (one sharp) and 6/8 time. It consists of eight staves of music. The first staff begins with a repeat sign. The melody is composed of eighth and sixteenth notes, with some measures containing beamed sixteenth notes. The second staff features a half note followed by a quarter note, then a half note with a slur over it. The third staff continues with eighth and sixteenth notes. The fourth staff ends with a repeat sign. The fifth staff is in 3/4 time, indicated by the time signature change. It features a half note, a quarter note, and a half note. The sixth staff continues with eighth and sixteenth notes. The seventh staff begins with a repeat sign and ends with a half note. The eighth staff continues with eighth and sixteenth notes and ends with a repeat sign and a double bar line.